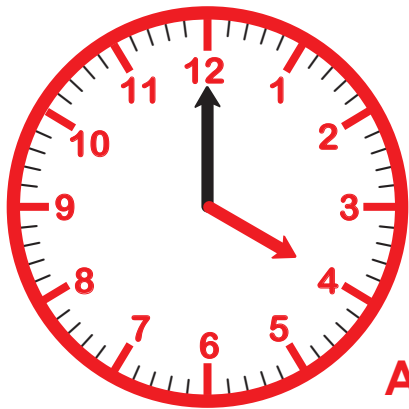


RECOGNIZING DAY & NIGHT

There are hours of the day that you have light and dark. When it is dark it is **nighttime**. When it is light it is **daytime**. When the sun sets it is called the **sunset** and when the sun rises it is called the **sunrise**.

DIRECTIONS: Circle the time of day that best matches the time on the clock!



A.M.



NIGHT



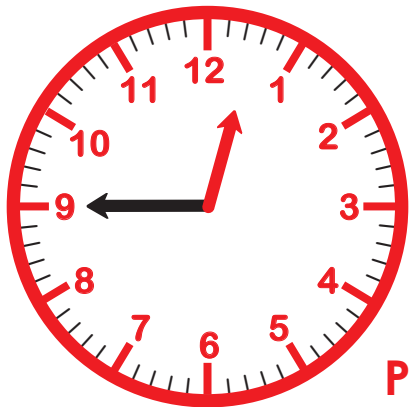
SUNRISE



DAY



SUNSET



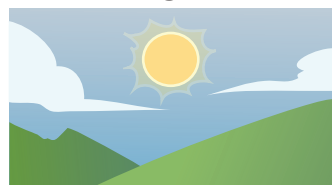
P.M.



NIGHT



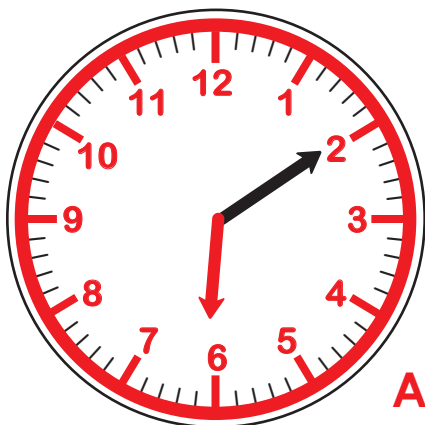
SUNRISE



DAY



SUNSET



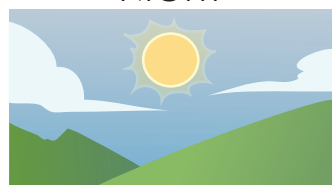
A.M.



NIGHT



SUNRISE



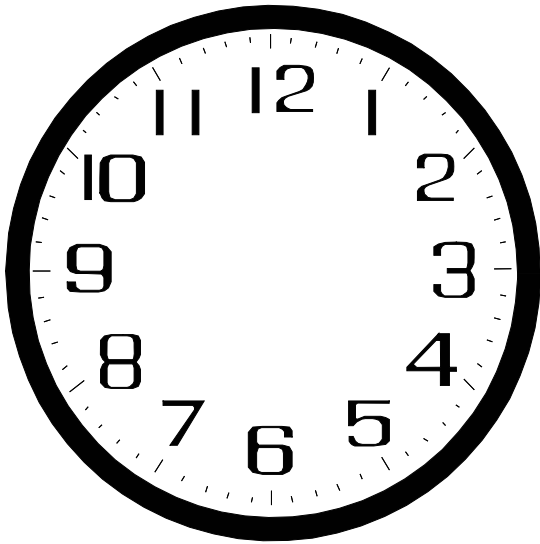
DAY



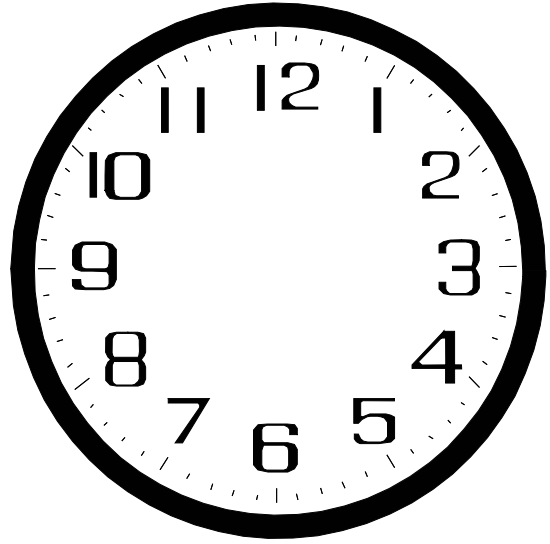
SUNSET

Draw the Correct Time

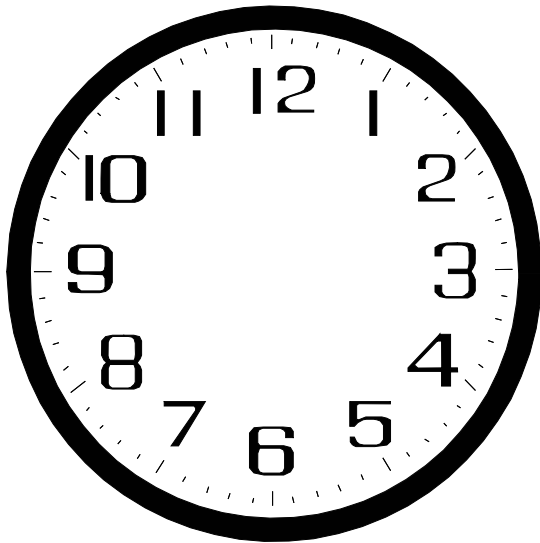
Draw the hands to show the correct time on each clock.



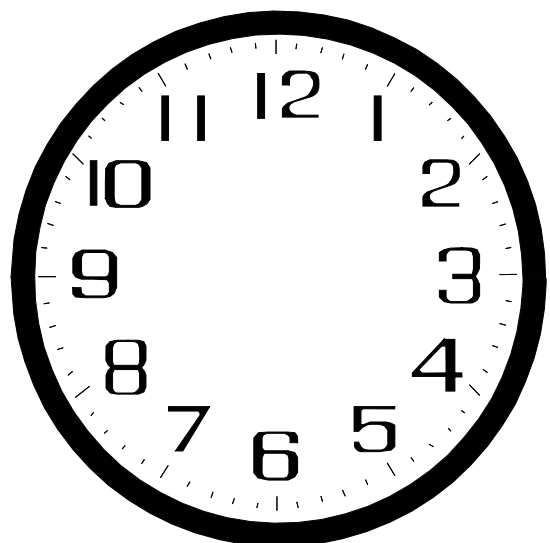
7:00



4:00



1:00



10:00



Watch It!

Look at the watches.

What time is it on each watch?

Draw a line to the correct time.



8:00



1:00



10:00



3:00

Time and
Money

Telling Time with Melissa Mouse

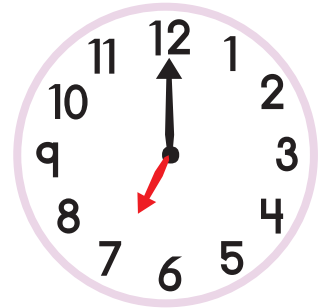
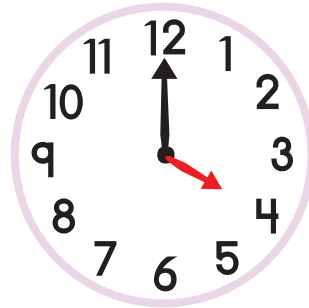
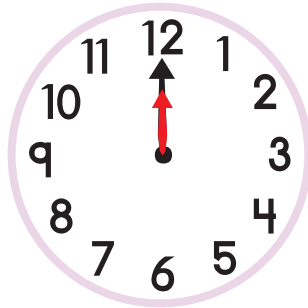
A mouse named Melissa needs help writing times! In these worksheets, kids look at each analog clock, determine the time, and then write the time. A great introduction to analog time for kindergartners.



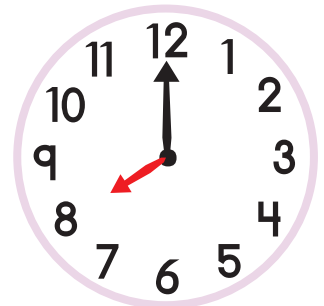
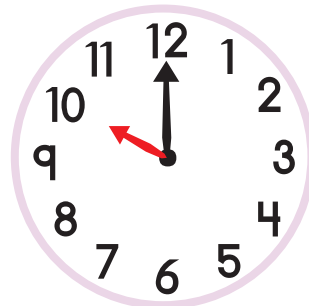
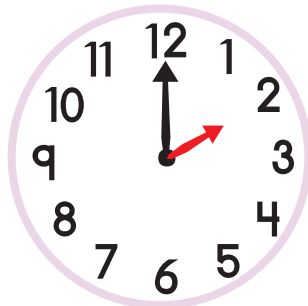
Telling Time 1

Melissa Mouse is learning how to read a clock. Help her match the times to the clocks by circling the clock that shows the time written on the left.

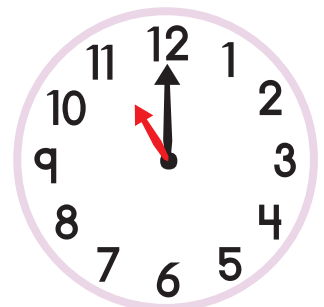
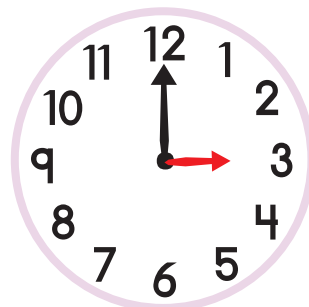
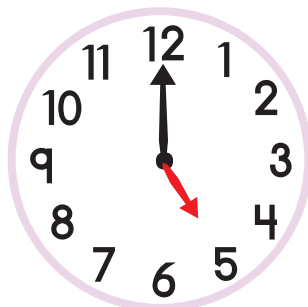
12:00



8:00



3:00



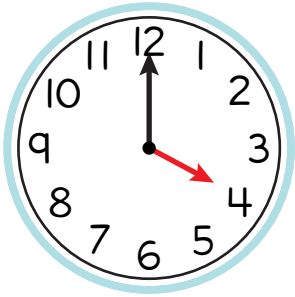
Melissa needs to be home for her supper by 5:00. Underline the clock that shows 5:00.



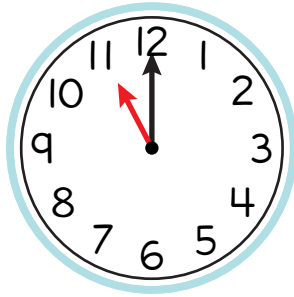
Telling Time 2



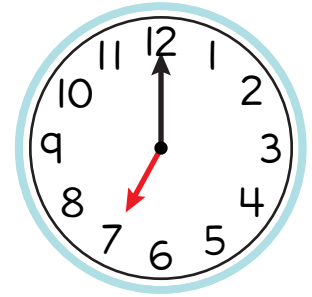
Melissa Mouse is learning how to read a clock. Help her finish writing the times for each clock by looking at each clock and writing the time you see.



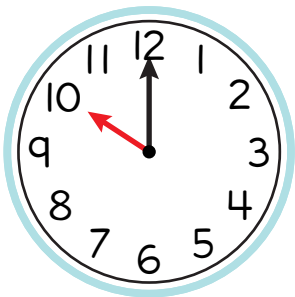
___:00



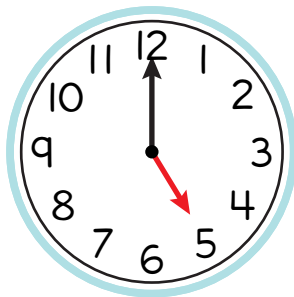
___:00



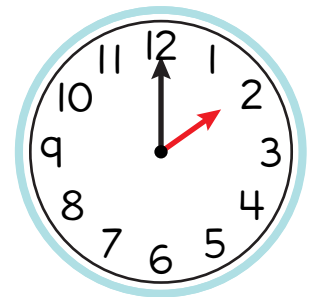
___:00



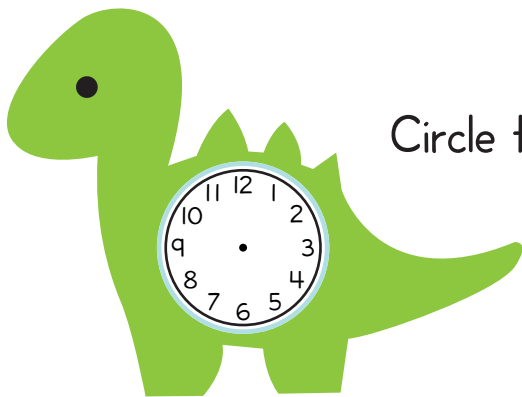
___:00



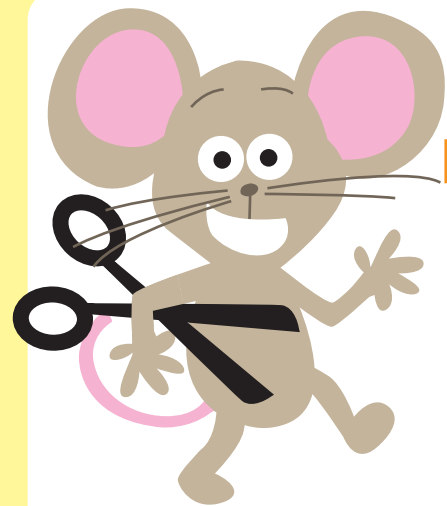
___:00



___:00

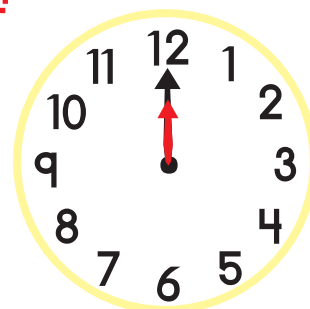
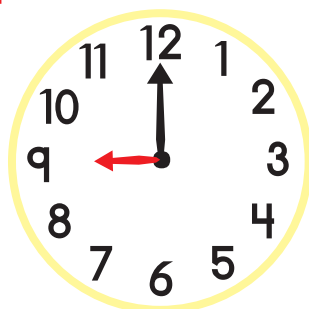
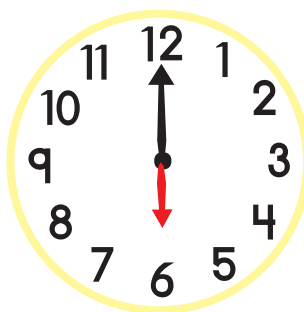
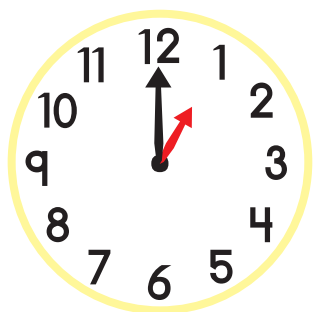


Circle the clock that shows **2:00**. Copy the hands onto Melissa's new dinosaur clock.



Telling Time 3

Melissa Mouse is learning how to read a clock. Will you help her match the times to the clocks?



Cut out the times below and glue them under the correct clocks.

9:00

12:00

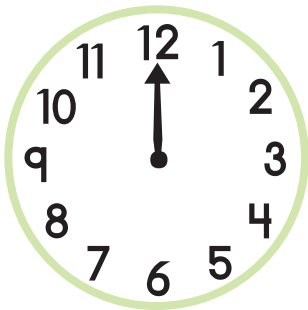
6:00

1:00

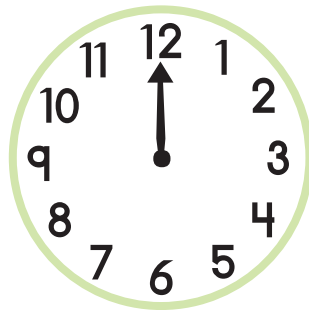
Telling Time 4



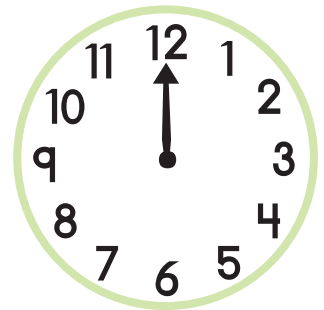
Melissa Mouse is learning how to read a clock.
Help her finish drawing the hands on each clock to match the
time below.



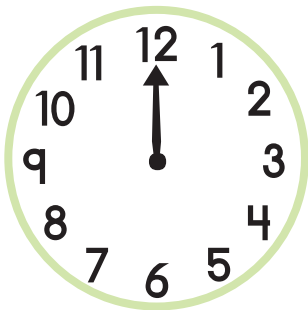
10:00



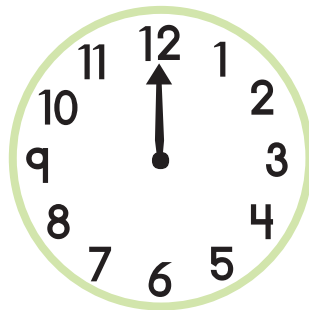
3:00



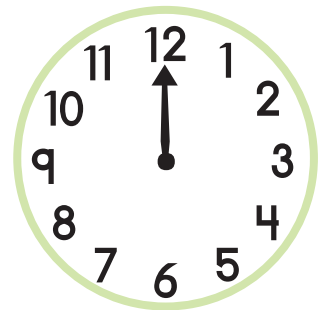
6:00



8:00

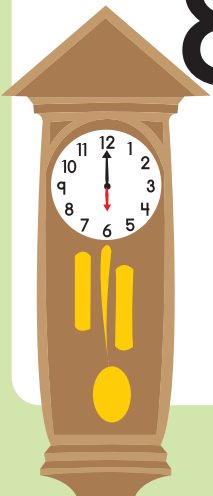


1:00



11:00

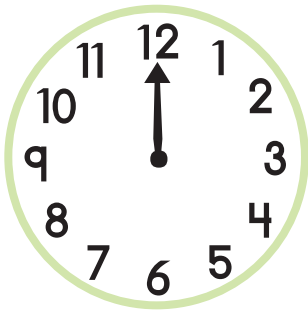
This is Melissa's house. She lives in a grandfather clock.
Circle the clock above that matches the time on the grandfather
clock.



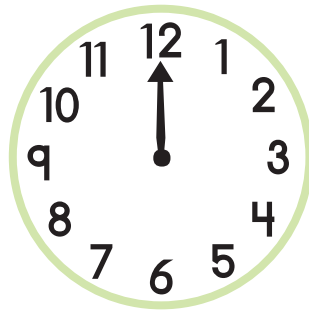
Telling Time 5



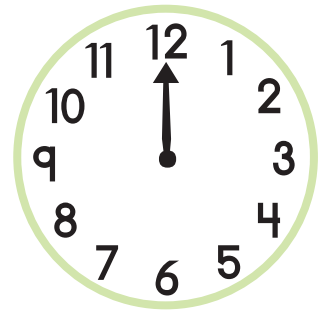
Melissa Mouse is learning how to read a clock.
Help her finish drawing the hands on each clock to match the
time below.



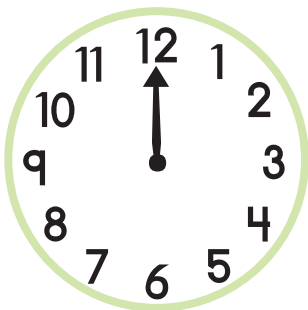
5:00



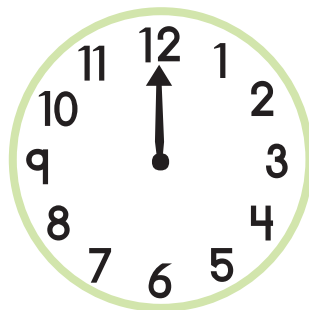
9:00



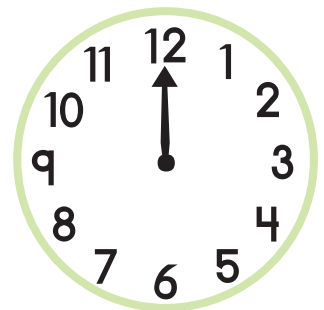
2:00



12:00



4:00



7:00

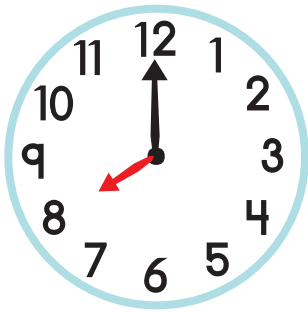


Melissa's friend Marty Monkey wants to practice telling time
too! Circle the clock above that matches the time on
Marty's clock.

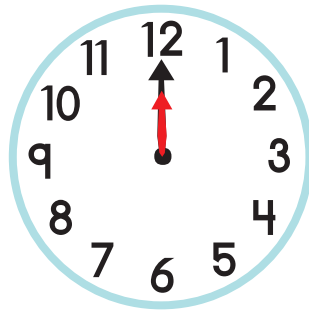
Telling Time 6



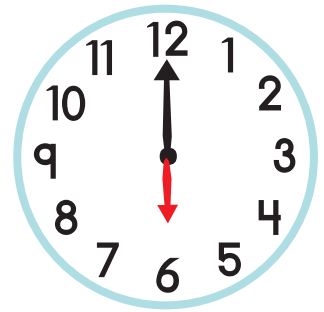
Melissa Mouse is learning how to read a clock.
Help her finish writing the times for each clock by looking at
each clock and writing the time you see.



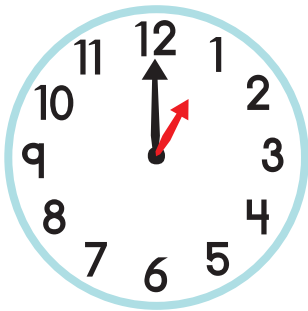
____:00



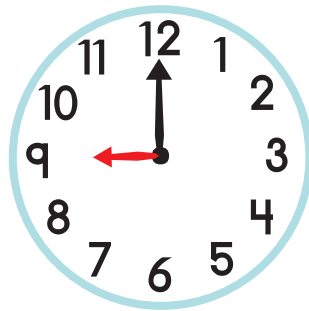
____:00



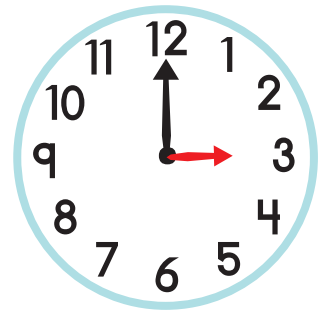
____:00



____:00



____:00



____:00



Melissa needs to be at school at **8:00**.
Circle the clock that shows **8:00**.

Answer Sheets

Telling Time with Melissa Mouse

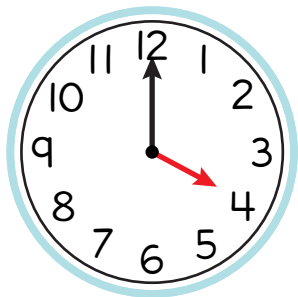
Telling Time with Melissa Mouse 2

Answers

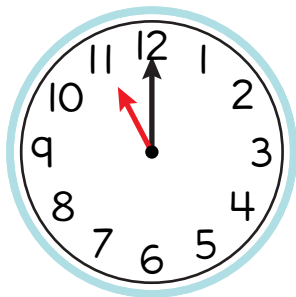
Telling Time 2



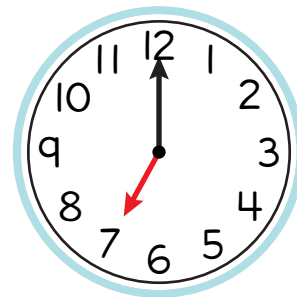
Melissa Mouse is learning how to read a clock. Help her finish writing the times for each clock by looking at each clock and writing the time you see.



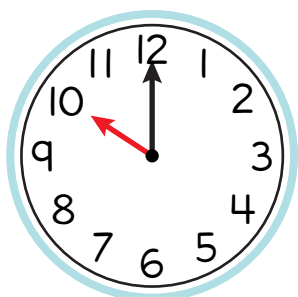
4:00



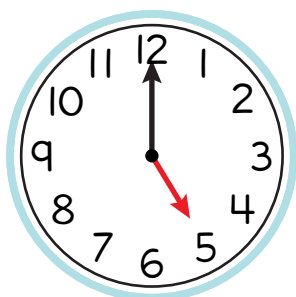
11:00



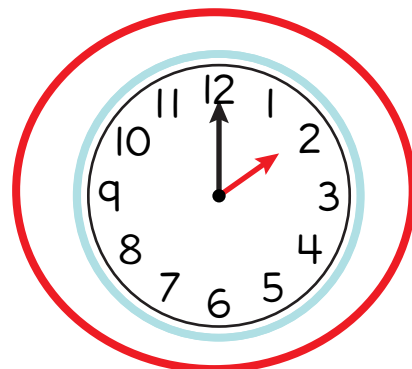
7:00



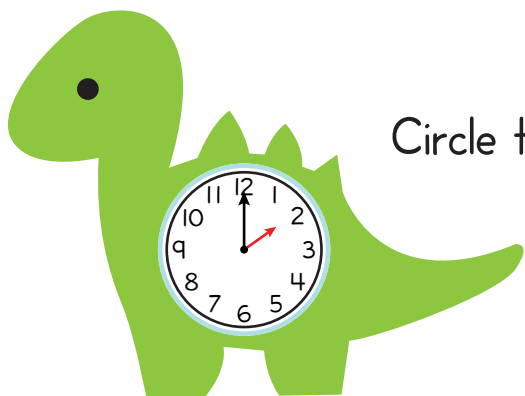
10:00



5:00



2:00



Circle the clock that shows **2:00**. Copy the hands onto Melissa's new dinosaur clock.